

MERCATOR 88



Ever driven 4 x Volvo Penta IPS 900?

What makes the 88' better value than others? First, the 88' delivers greater speed, a bigger range and much roomier, more comfortable cabins. Second, the 88' offers lot of new solutions to extend and modify the interior. And third, the 88' is highly stylish, making it the number one yacht choice searching a unique way of powerful boating.

The shape of the MERCATOR 88' is all about space and light.

Performance and 40 knots top speed results of light weight and the power of four IPS drives wich provide 2.800 HP.

The exterior styling is powerfull designed for unicity. Windows scaled to the max give the yacht a racy look and give generous light to the interior spaces.

Inside or out, you feel close to the sea, with a design that enlarge open faces and offers free view. The complete disappearing salon-glasdoors turns inside into outside. Also impressive is the self-supporting dashboard above the open skylounge.

At stern there are two relaxing areas about 2,5 x 1,6m wich can be swiched into dining area. A drive mechanism allows to make the table flush into the floor.

Naturally the 88' carries a tender in ist garage.



MERCATOR

88





Technical data

MERCATOR 88'

Length o.a.: 26.4 m

Length WL: 23.1 m

Beam: 6.50 m

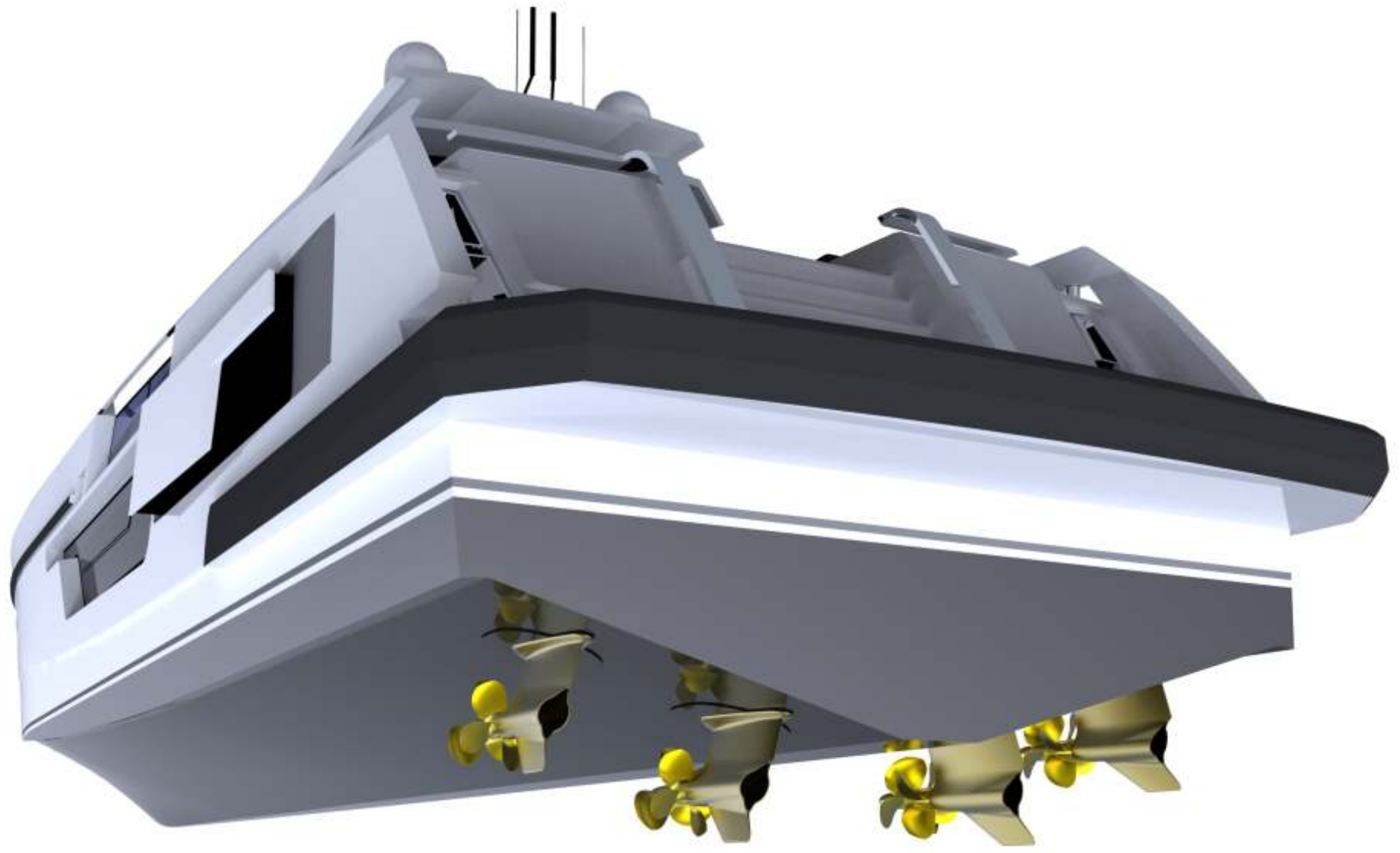
Draft: 1.05 m

Fuel: 8.500 l

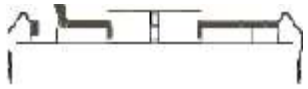
Top speed approx.: 40 knots

cruising speed approx.: 35 knots

Propulsion: 4 x 700 HP
Volvo Penta IPS







Foldable sun pad
at stern for dining area
or sunbathing.



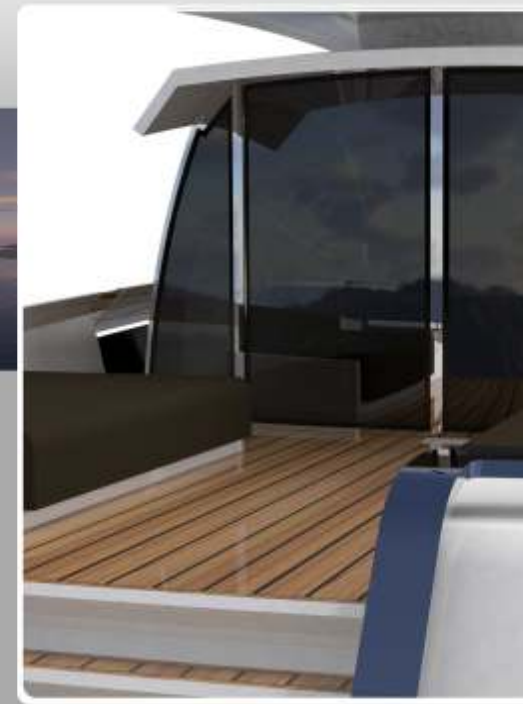
Main deck



Main deck dinner option



Lower deck



MERCATOR 88





Design by **iYacht**
[ai'jet]
www.i-yacht.de